

J. P. Mascaro & Sons

If it's service, it's us!

**OPERATES AN INTEGRATED
“SUSTAINABLE”
WASTE SERVICE SYSTEM**

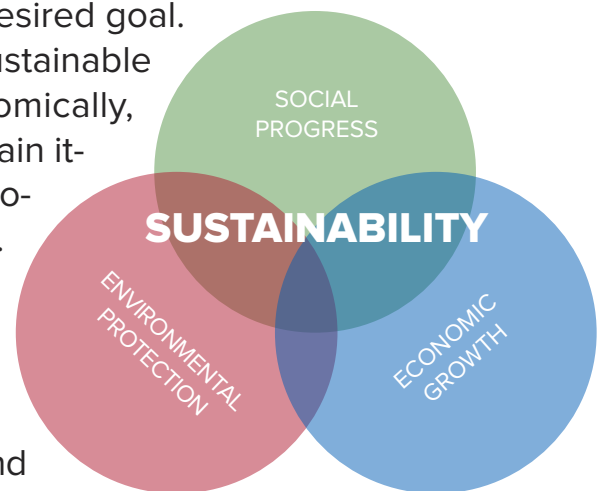


J. P. Mascaro & Sons

OPERATES AN INTEGRATED “SUSTAINABLE” WASTE SERVICE SYSTEM

In today’s modern world, “Sustainability” is a desired goal. In the context of the solid waste industry, a “Sustainable Waste Service System” is one that can economically, socially and environmentally maintain and sustain itself over time while promoting environmental protection and without damaging the environment.

Waste Service System Sustainability is not a marketing tool to be written about, but not implemented; rather, it is about everyday operational practices that well-serve its owners, its users and society as a whole, today and in the future.



J. P. Mascaro & Sons is proud to own and manage a group of permitted and regulated environmental facilities that operate in conjunction with each other to comprise an “Integrated Sustainable Waste Service System” that will stand the test of time, that provides valuable and affordable customer services, and that promotes and protects the environment.

The “Sustainable” Mascaro environmental facilities, in close proximity to each other, include **TotalRecycle**, a modern high-volume single stream recycling facility, **A&M Composting**, the largest beneficial use composting facility in Pennsylvania, and the **Pioneer Crossing Landfill**, a regional end use disposal facility primarily for non-recyclables that generates Green Energy from its onsite gas to electric plant.

Together, these Mascaro facilities meet the three-prong test associated with true sustainability – economic growth, social progress and environmental protection. Following this introductory narrative are Fact Sheets related to each of the facilities included in the Mascaro “Integrated Sustainable Waste Service System.”

If it’s service, it’s us!

TOTAL RECYCLE = SUSTAINABILITY

A PART OF MASCARO'S INTEGRATED "SUSTAINABLE" WASTE SERVICE SYSTEM



- ♻️ Mascaro's New Modern 75,000 Sq. Ft. Single Stream Recycling Facility
- ♻️ A Technologically Advanced, Fully Automated Single Stream Recycling Facility; Innovative Sorting Equipment
- ♻️ Located in Exeter Township, Pennsylvania, with an excellent highway and transportation access
- ♻️ Can Recycle 700 Tons per Day, or 20,000 Tons per Month
- ♻️ Used by Regional Area Municipalities, Businesses and Waste Haulers
- ♻️ Facility Recycles Plastics, Cardboard, Aluminum, Newspaper, Clear and Colored Glass, Steel, Tin, E-waste and Aseptics
- ♻️ Recycling Facility that is Economically, Socially and Environmentally Sustainable
- ♻️ Highly Successful End Marketing of Processed Recyclables for Reuse
- ♻️ Convenient operating hours 6 days a week
- ♻️ Onsite Recycling Educational Center and Tours
- ♻️ Adjoining Modern Recyclables Drop-off Center
- ♻️ Adjacent to Mascaro's Pioneer Crossing Landfill
- ♻️ Professional Staff





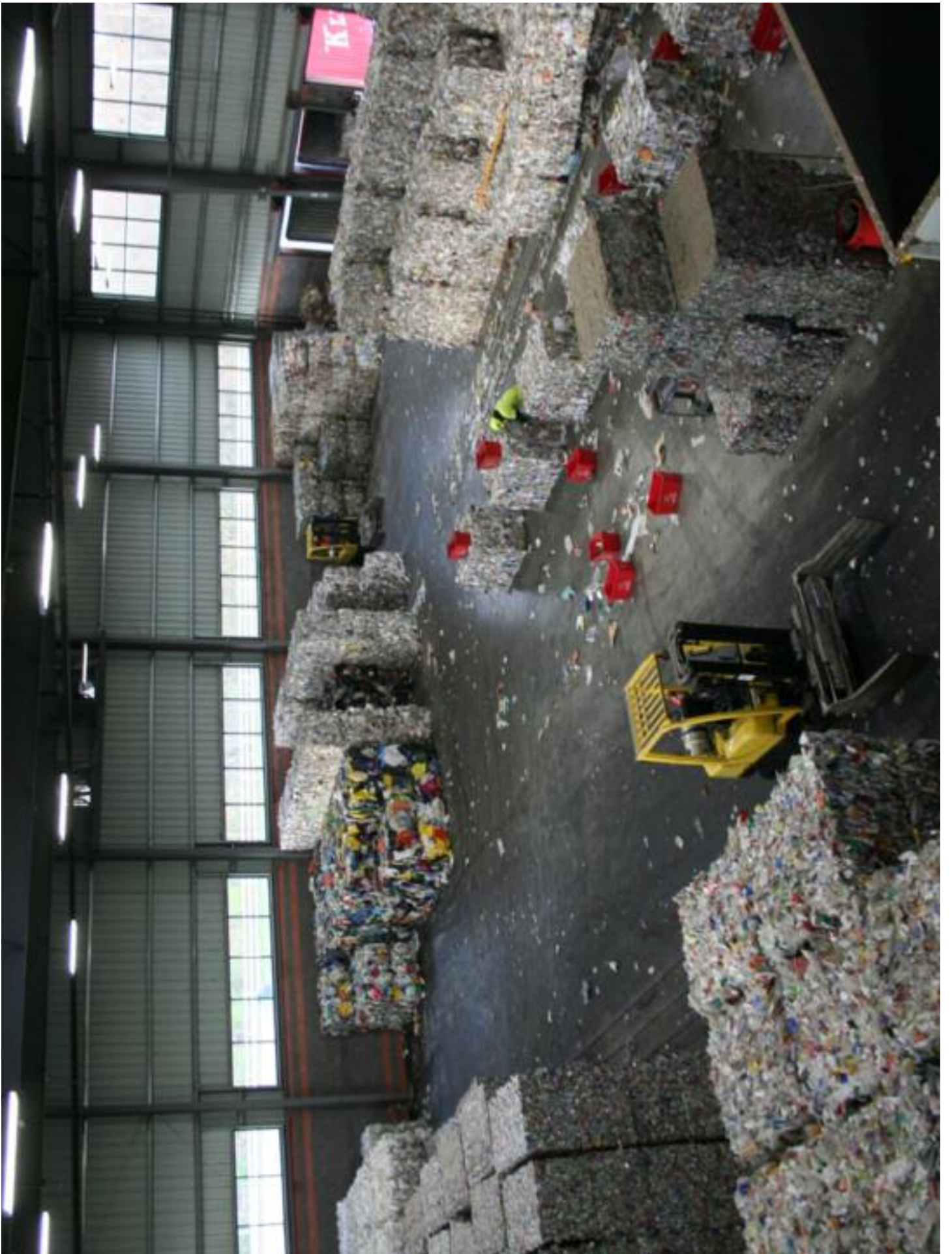
Total Recycle
Scale Office



NO PARKING
IN FRONT OF
BUSINESS







A&M COMPOST FACILITY = SUSTAINABILITY

A PART OF MASCARO'S INTEGRATED "SUSTAINABLE" WASTE SERVICE SYSTEM



- C DEP Permitted and Regulated Beneficial Use Compost Facility
- C Permitted for municipal sludge and food waste composting
- C Proven Composting Technology — Methodology
- C 11-Acre 445,500 Sq. Ft. Indoor Compost Facility Building with Biofiltration Odor Control System; largest in Pennsylvania
- C Produces Class A Exceptional Quality Compost; Meets DEP and EPA Regulatory Use Standards for compost
- C Stringent DEP Quality Control Composting Standards
- C Comprehensive environmental protection and control systems
- C Finished Class A Compost Marketed as “Landscapers’ Advantage”
- C Finished Compost Used by Landscapers, Nurseries, Golf Courses, Topsoil Blenders, Farmers, Tree Farmers and Others
- C Compost Facility is Economically, Socially and Environmentally Sustainable
- C Supported by Local Community; works with citizens advisory committee
- C Fully Bonded and Insured









PIONEER CROSSING LANDFILL = SUSTAINABILITY

A PART OF MASCARO'S INTEGRATED "SUSTAINABLE" WASTE SERVICE SYSTEM



- DEP-permitted Municipal Waste Landfill
- Strategically located in Exeter Township, PA; excellent highway and transportation access
- Comprehensive environmental protection and control systems
- Long-term permitted capacity for customers
- Provides needed services for regional municipalities, businesses and industries
- Host Community Agreement with home township
- Onsite recycling drop-off center
- Onsite Green Energy gas to electric plant
- Onsite recycling and reuse operational practices
- Adjacent to "TotalRecycle" – a Mascaro single stream recycling facility
- Fully bonded and insured
- Works and cooperates with Citizens Advisory Committee
- Facility is economically, socially and environmentally sustainable
- Onsite Environmental Education Center and tours
- First to be permitted under DEP's new stringent "Harms-Benefits" regulatory standard
- Managed by Registered Professional Engineer; excellent facility compliance record



Pioneer Crossing Landfill

Exeter Township
Drop-off Recycling Center



ENVIRONMENTAL RECORD
This facility has worked

10	YEARS
0	MONTHS
25	DAYS

without an environmental violation.

COMPLIANCE IS GOOD BUSINESS!

PIONEER CROSSING LANDFILL'S GAS-TO-ENERGY PLANT

We recycle the methane produced from the decomposition of waste to produce an alternative fuel and renewable power for the community. Using landfill gas to produce electricity avoids the need to generate electricity at traditional power plants and thus reduces air pollution from these plants.

This Project is a joint venture between G.A.S. Energy Technology, Inc. and The Pioneer Crossing Landfill





MASCARO'S "CLEAN & GREEN" BUSINESS COMMITMENT COMPLIMENTS ITS INTEGRATED SUSTAINABLE WASTE SERVICE SYSTEM

J. P. Mascaro & Sons has demonstrated a "Clean & Green" business commitment that well-serves its customers, its operations and the communities where it does business. Acting Clean and Green in its business affairs is an important part of Mascaro's Integrated Sustainable Waste Service System. Among other things, Mascaro has demonstrated its "Clean & Green" business commitment:

- By Striving for 100% Environmental Compliance
 - By Implementing the Plan-Do-Check-Act Environmental Management System
 - By Prioritizing Waste Reduction, Recycling and Reuse
 - By Operating Modern Single Stream Recycling Facilities
 - By Operating the Largest Beneficial Use Compost Facility in Pennsylvania
 - By Developing and Operating Landfills with Comprehensive Environmental Protection and Control Systems
- By Generating Green Energy (i.e., Electricity) from Landfill Gas
 - By Minimizing the Landfilling of Solid Waste
 - By Operating a Modern, Clean and Fuel-Efficient Waste Transportation Fleet
 - By Providing and Operating Community Drop-off Recycling Centers
 - By Maintaining about 7,000 Acres of Company Land in "Open Space" Condition
 - By Funding and Completing Environmental Clean-up Projects
 - By Supporting and Contributing to Recognized Land Trusts, Open Space Programs and Other Environmental Clean & Green Programs
- By Donating Land for Parks and Recreational Purposes
 - By Developing Onsite Facility Environmental Education Centers and Conducting Educational Facility Tours
 - By Developing and Implementing a Multi-million Dollar Elementary School "RESPECT" Program Dealing with the Importance of Respect Generally, as well as Respect for the Environment

**SOME "THINK" CLEAN & GREEN; MASCARO "ACTS"
CLEAN & GREEN**